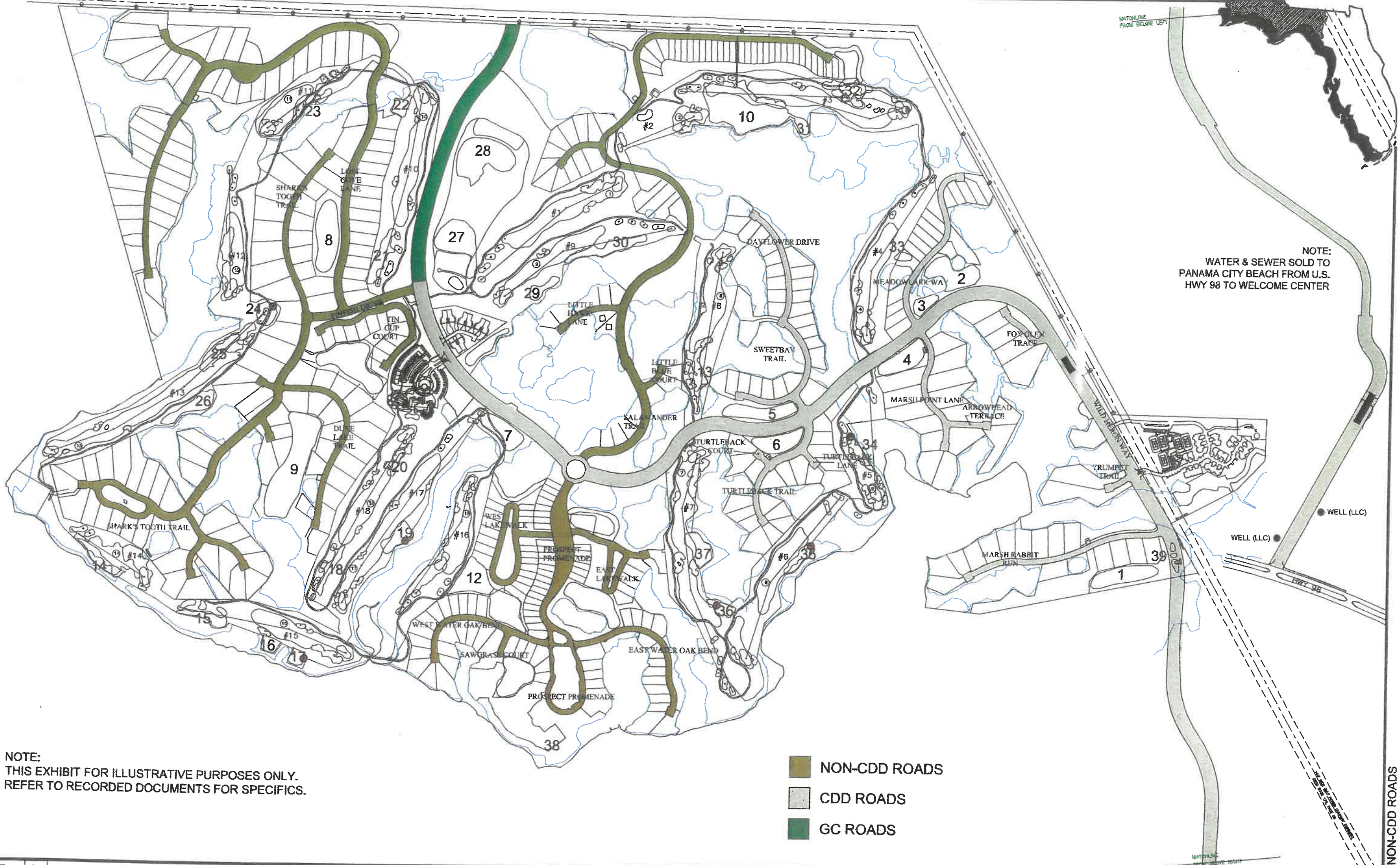


USER ID: REF FILE: P:\60504 LP CDD\DRAWING\60521-Exhibits POA & ODD -VNB-Swales-Roads.dwg  
 @PANHANDLE ENGINEERING, INC. ALL RIGHTS RESERVED. NO PART OF THIS DOCUMENT MAY BE REPRODUCED OR UTILIZED IN ANY FORM WITHOUT PRIOR WRITTEN AUTHORIZATION OF PANHANDLE ENGINEERING, INC.  
 FOR SCALE VERIFICATION AFTER ENLARGEMENT, THIS LINE SHOULD BE 1" LONG



NOTE:  
 WATER & SEWER SOLD TO  
 PANAMA CITY BEACH FROM U.S.  
 HWY 98 TO WELCOME CENTER

NOTE:  
 THIS EXHIBIT FOR ILLUSTRATIVE PURPOSES ONLY.  
 REFER TO RECORDED DOCUMENTS FOR SPECIFICS.

- NON-CDD ROADS
- CDD ROADS
- GC ROADS

REV	DATE	BY	REVISIONS	SCALE
3	29 APR 08	REF/MS	REVISED NON-CDD ROADS SHADING	DESIGNED BY: REF/MS
2	22 APR 08	REF/MS	APRIL 2008 UPDATE	DRAWN BY: REF
1	AUG 07	REF/MS	REVISED PER AUGUST 2007 TRANSFERS	REVIEWED BY: JHS
NOT			RELEASED FOR CONSTRUCTION BY: DATE:	ISSUE DATE: 14 APR 08

**PANHANDLE ENGINEERING, INC.**  
 ENVIRONMENTAL ENGINEERS • CIVIL ENGINEERS • LAND PLANNERS  
 3005 SOUTH HIGHWAY 77 LYNN HAVEN, FLORIDA 32444  
 (850)763-5200 Fax(850)769-0730 panhandleengineering.com

**EXHIBIT "B-1"**  
**CDD & NON-CDD ROADS**  
**WILD HERON**  
 BAY COUNTY, FLORIDA

James H. Stortins, P.E. 0000039197  
 James H. Southall, P.E. 0000039637  
 DPR CERTIFICATION No. EB-007806

SHEET NUMBER  
**1 OF 5**  
 PROJECT NUMBER  
**60521**

CDD & NON-CDD ROADS